

### GENERAL FEATURES

- **GEL Technology** - DG batteries comes from the internationally superior Gel technology. It is ideal for standby or frequent cyclic discharge applications under extreme environments.
- **Long Life Time** - By using strong grids, high purity lead and patented Gel electrolyte, the DGseries offers excellent recovery after deep discharge under frequent cyclic discharge use, and can deliver 400 cycles at 100% DOD.
- **Maintenance-Free, Non-Spillable** - Proven VRLA technology guarantees safe operation without maintenance and 'non- restricted article' status for transportation.
- **Excellent Recovery from Deep Cycle** - Unique technical processes are used into the grid alloy and electrolyte additive, in this case the battery can be recharged after being over-discharged.
- **Designed-In Reliability** - Cutting-edge manufacturing and process control combined with meticulous quality assurance procedures guarantee consistent and dependable performance



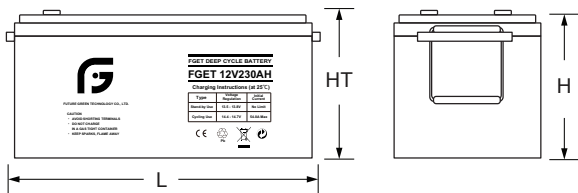
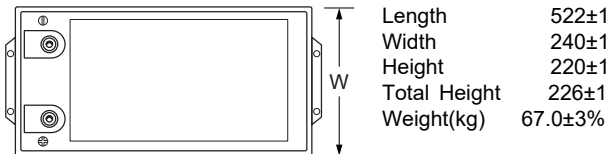
### PERFORMANCE SPECIFICATIONS

<b>Nominal Voltage</b>	12V(6 cells)	
<b>Design Floating Life @25°C</b>	12 Years	
<b>Nominal Capacity @25°C</b>	20 hour rate	230.00Ah
	11.50A to 10.50V	
	10 hour rate	225.00Ah
	22.50A to 10.50V	
	5 hour rate	197.00Ah
	39.40A to 10.20V	
	3 hour rate	177.90Ah
	59.30A to 9.90V	
	1 hour rate	130.90Ah
	130.90A to 9.60V	
<b>Internal Resistance</b>	Full Charged Battery@25°C	<3mΩ
<b>Energy Density (20-hr. rate)</b>	94.23W-h/l	
<b>Specific Energy (20-hr. rate)</b>	41.19W-h/kg	
<b>Shelf Life (nominal capacity at 20°C)</b>	1 Month	97%
	3 Months	91%
	6 Months	83%
<b>Max Short-Duration Discharge Current</b>	10 Sec	686.40A
	Initial Charging Current	
<b>Standby Use Charge (Constant Voltage) @25°C</b>	Less than 69.0A	
	Voltage 13.6-13.8 V	
<b>Cycle Use Charge (Constant Voltage) @25°C</b>	Initial Charging Current	
	Less than 69.0A	
<b>Operating Temperature Range</b>	Voltage 14.6-14.8 V	
	Charge	-20°C to 50°C
	Discharge	-40°C to 60°C

### GENERAL FEATURES

mm

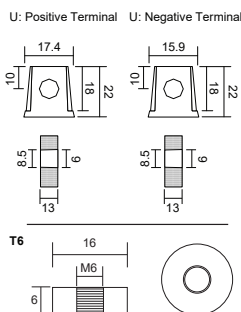
Unit: mm

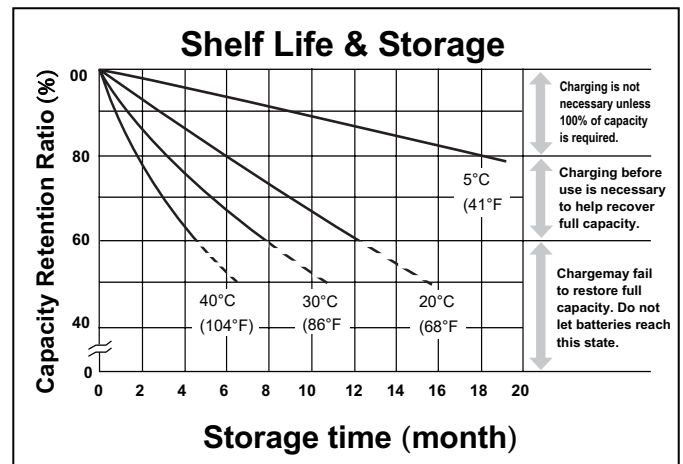
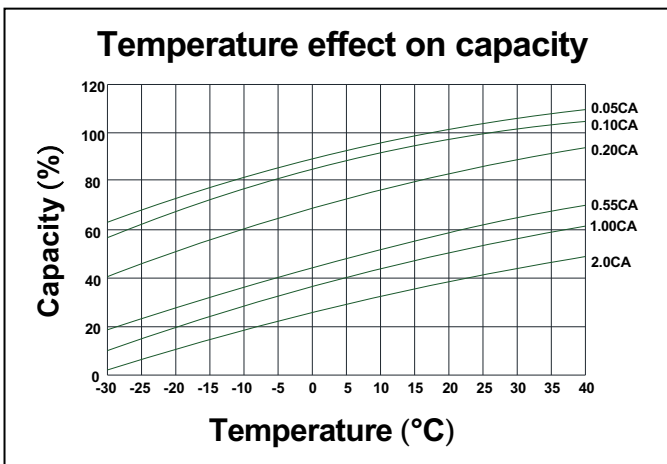
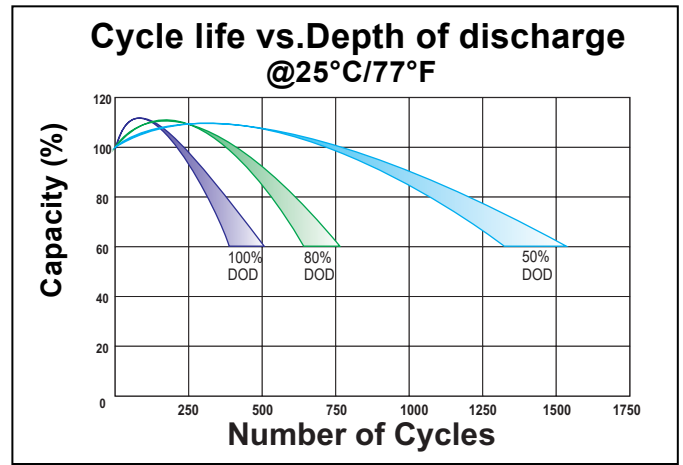
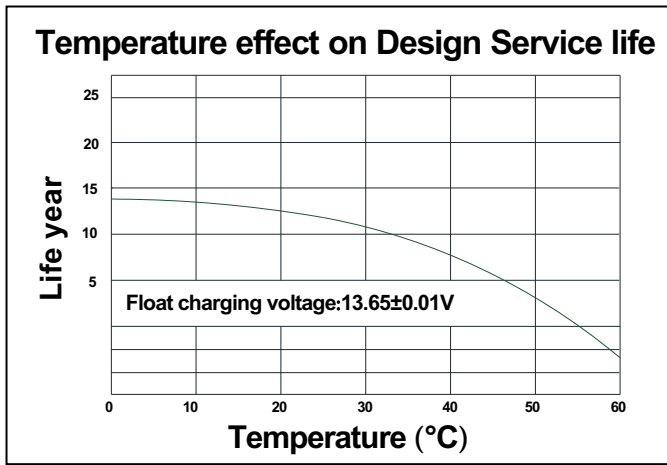
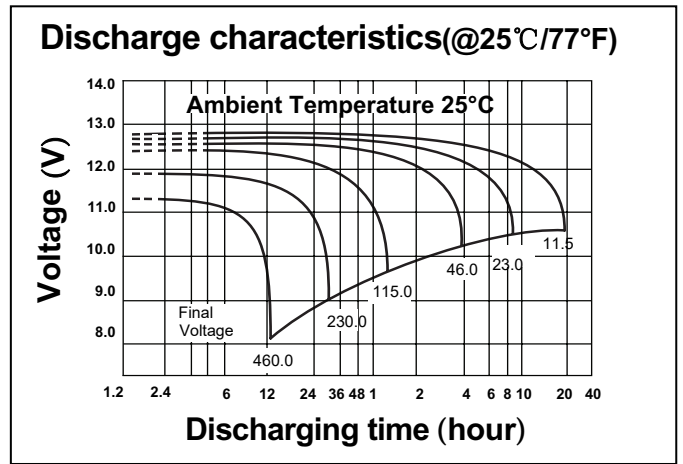
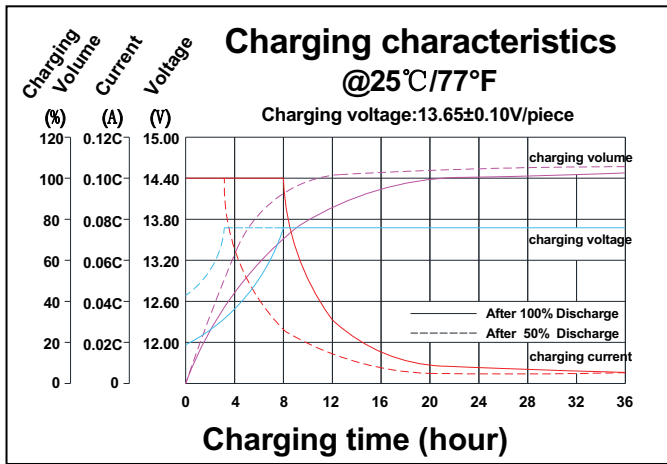


### TERMINALS

mm

- U: Universal terminals: Heavy-duty posts with 'nut & bolt' fasteners
- T6: Threaded insert w. 6 mm stud fastener





**CONSTANT CURRENT DISCHARGE RATINGS (Amperes at 25°C)**

F.V/Time	10MIN	15MIN	30MIN	1HR	2HR	3HR	4HR	5HR	8HR	10HR	20HR
9.60V	456.2	359.6	208.4	130.9	80.8	60.2	48.1	40.6	27.7	23.5	12.0
10.0V	441.0	348.8	204.1	128.4	79.4	59.3	47.5	40.1	27.4	23.2	11.8
10.2V	421.1	334.7	198.3	125.1	77.6	58.1	46.6	39.4	27.0	22.9	11.7
10.5V	394.6	315.7	190.4	120.7	75.1	56.4	45.4	38.5	26.4	22.5	11.5
10.8V	359.1	290.1	179.6	114.5	71.7	54.1	43.7	37.2	25.6	21.9	11.2
11.1V	310.6	254.9	164.3	105.7	66.7	50.7	41.2	35.3	24.4	21.0	10.8