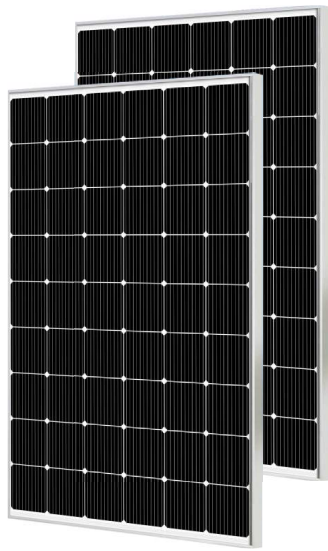


Module Picture



SP400M-54

Comprehensive Certificates

- IEC61215, IEC61730
- ISO9001:2015 Quality management systems
- ISO45001: Environmental management systems
- ISO45001:2018 Occupational health and safety management systems

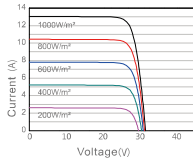


Electrical Parameters at (STC)

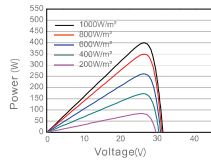
| Module | Power (W) | Module Efficiency(%) | Voltage at Pmax(Vmp) | Current at Pmax(Imp) | Open Circuit Voltage(Voc) | Short Circuit Current(Isc) | Power Tolerance(w) |
|--------|-----------|----------------------|----------------------|----------------------|---------------------------|----------------------------|--------------------|
| SP400M | 400W | 20.70% | 30.78 | 13.00 | 37.02 | 13.78 | ±3% |

Characteristics

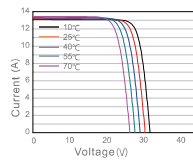
Current Voltage Curve SP400M/32



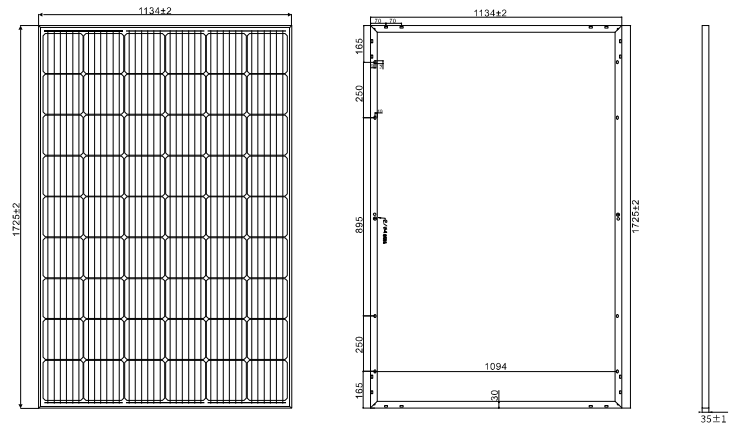
Power Voltage Curve SP400M/32



Current Voltage Curve SP400M/32



Mechanical Diagrams



PS: Frame color and cable length can be customized

| Mechanical Parameters | | Packing | |
|-----------------------|---------------------------------|----------------|----------------|
| Solar Cell(Type/Size) | MONO(182mm) | Module Type | SP400M-54 |
| Solar Cells Number | 54Pcs(6x9) | Carton Size | 1745x1160x85mm |
| Dimension | 1725x1134x35mm | Number | 2Pcs/Ctn |
| Weight | 21.3Kg/Pcs | Weight | 43Kg/Ctn |
| Tempered Glass | 3.2 mm High Permeability Coated | Volume | 0.172Cbm/Ctn |
| Frame | Anodized aluminum alloy | 20GP Container | 340Pcs |
| Junction Box | IP67, 3*bypass diode | 40HQ Container | 810Pcs |
| Cable | 4.0mm², (+)1000mm/(-)1000mm | | |
| Connector | Original MC4/Compatible MC4 | | |
| Mechanical Load | Front 5400PA/back 2400PA | | |

STC: ☀️ Light intensity 1000W/m², 🔋 Battery temperature: 25°C, ☁️ atmosphere quality=15

NOCT: ☀️ Light intensity 800W/m², 🔋 Battery temperature: 20°C, ☁️ atmosphere quality=15, 🌬️ wind velocity 1m/s

Final explanation rights reserved