



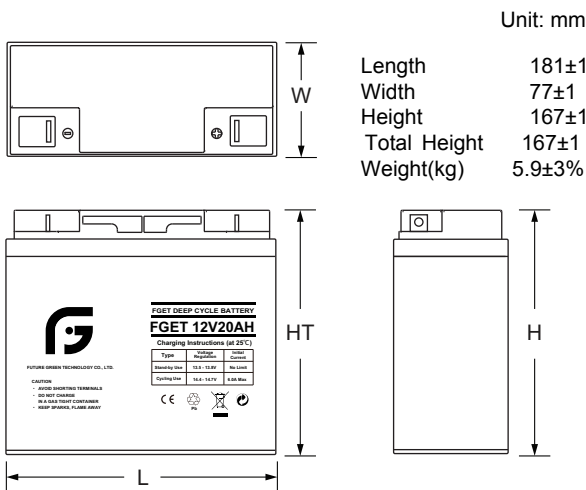
### GENERAL FEATURES

- **Long Service Life** - Thick plate design and efficient gas recombination yield a service life expectancy of up to 10 years in standby mode.
- **Low Internal Resistance** - Superb high-rate discharge characteristics ensure reliable performance in UPS and Telecom applications.
- **Maintenance-Free, Non-Spillable** - Proven VRLA technology guarantees safe operation without maintenance and 'non-restricted article' status for transportation.
- **Low Self-Discharge** - Lead-calcium alloy grids and use of high purity lead account for superior shelf-life characteristics permitting storage for extended periods of time.
- **Designed-In Reliability** - Cutting-edge manufacturing and process control combined with meticulous quality assurance procedures guarantee consistent and dependable performance

### PERFORMANCE SPECIFICATIONS

|  |   |               |
|--|---|---------------|
| <b>Nominal Voltage</b>                             | 12V(6 cells)  |               |
| <b>Design Floating Life @25°C</b>                  | 12 Years  |               |
| <b>Nominal Capacity @25°C</b>                      | 20 hour rate<br>1.00A to 10.50V   | 20.00Ah       |
|  | 10 hour rate<br>1.92A to 10.50V   | 19.20Ah       |
|  | 5 hour rate<br>3.58A to 10.20V  | 17.90Ah       |
|  | 3 hour rate<br>5.40A to 9.90V   | 16.20Ah       |
|  | 1 hour rate<br>12.76A to 9.60V  | 12.76Ah       |
| <b>Internal Resistance</b>                         | Full Charged Battery@25°C <14mΩ   |               |
| <b>Energy Density (20-hr. rate)</b>                | 103.12W-h/l   |               |
| <b>Specific Energy (20-hr. rate)</b>               | 40.68W-h/kg   |               |
| <b>Shelf Life (nominal capacity at 20°C)</b>       | 1 Month   | 97%           |
|  | 3 Months  | 91%           |
|  | 6 Months  | 83%           |
| <b>Max. Discharge Current@25°C</b>                 | 7 Min.  | 60.0A         |
| <b>Max Short-Duration Discharge Current</b>        | 10 Sec  | 200.0A        |
| <b>Standby Use Charge (Constant Voltage) @25°C</b> | Initial Charging Current<br>Less than 6.0A<br>Voltage 13.7-13.9V  |               |
|  | <b>Cycle Use Charge (Constant Voltage) @25°C</b><br>Initial Charging Current<br>Less than 6.0A<br>Voltage 14.6-14.8 V |               |
| <b>Operating Temperature Range</b>                 | Charge  | -0°C to 50°C  |
|  | Discharge   | -20°C to 60°C |

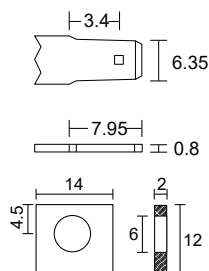
### GENERAL FEATURES

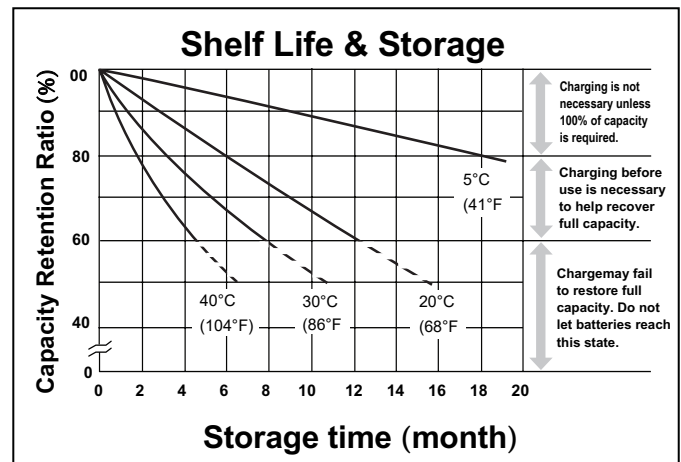
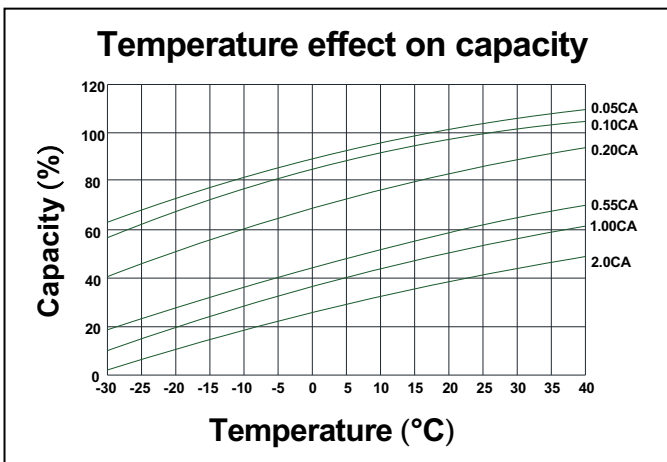
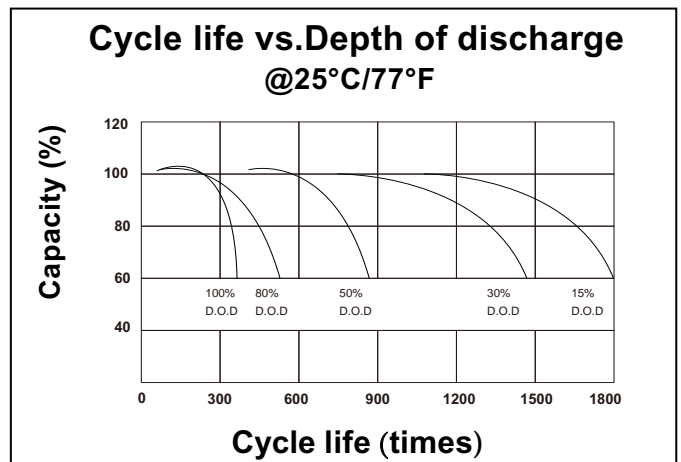
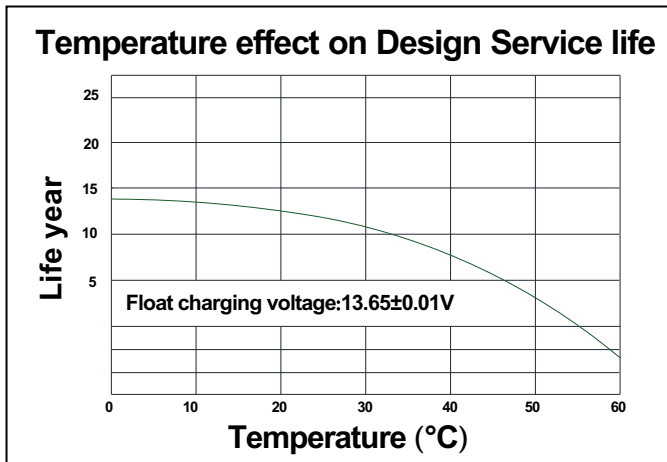
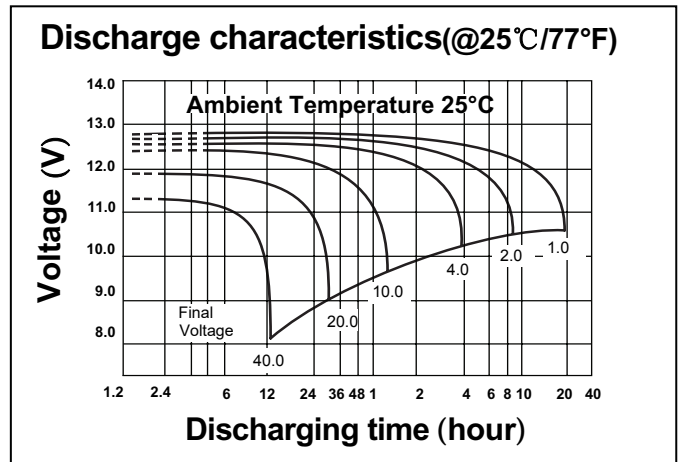
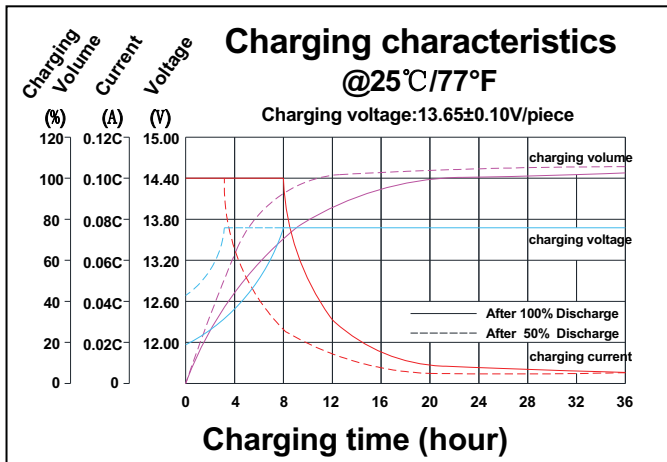


### TERMINALS

mm

- F2: Quick disconnect AMP, INC. Faston tabs, 0.250" x 0.032"
- NB2: Tin plated brass post with nut & bolt connectors





**CONSTANT CURRENT DISCHARGE RATINGS (Amperes at 25°C)**

| F.V/Time | 5MIN  | 10MIN | 15MIN | 30MIN | 1HR   | 2HR   | 3HR   | 4HR   | 5HR   | 8HR   | 10HR  | 20HR  |
|----------|-------|-------|-------|-------|-------|-------|-------|-------|-------|-------|-------|-------|
| 9.60V    | 79.30 | 51.72 | 38.15 | 22.08 | 12.76 | 7.527 | 5.472 | 4.357 | 3.678 | 2.458 | 2.002 | 1.041 |
| 10.0V    | 76.43 | 50.17 | 37.15 | 21.59 | 12.52 | 7.417 | 5.399 | 4.303 | 3.636 | 2.433 | 1.983 | 1.033 |
| 10.2V    | 72.70 | 48.15 | 35.84 | 20.95 | 12.21 | 7.270 | 5.302 | 4.231 | 3.579 | 2.400 | 1.957 | 1.022 |
| 10.5V    | 67.92 | 45.54 | 34.13 | 20.11 | 11.80 | 7.076 | 5.174 | 4.135 | 3.504 | 2.356 | 1.924 | 1.007 |
| 10.8V    | 61.88 | 42.19 | 31.93 | 19.03 | 11.26 | 6.822 | 5.004 | 4.009 | 3.405 | 2.298 | 1.879 | 0.987 |
| 11.1V    | 54.45 | 38.01 | 29.15 | 17.64 | 10.57 | 6.490 | 4.783 | 3.844 | 3.274 | 2.221 | 1.820 | 0.961 |