

### GENERAL FEATURES

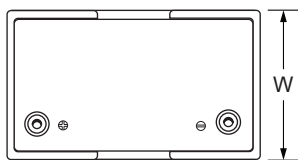
- **Long Service Life** - Thick plate design and efficient gas recombination yield a service life expectancy of up to 10 years in standby mode.
- **Low Internal Resistance** - Superb high-rate discharge characteristics ensure reliable performance in UPS and Telecom applications.
- **Maintenance-Free, Non-Spillable** - Proven VRLA technology guarantees safe operation without maintenance and 'non-restricted article' status for transportation.
- **Low Self-Discharge** - Lead-calcium alloy grids and use of high purity lead account for superior shelf-life characteristics permitting storage for extended periods of time.
- **Designed-In Reliability** - Cutting-edge manufacturing and process control combined with meticulous quality assurance procedures guarantee consistent and dependable performance

### PERFORMANCE SPECIFICATIONS

<b>Nominal Voltage</b>	12V(6 cells)	
<b>Design Floating Life @25°C</b>	12 Years	
<b>Nominal Capacity @25°C</b>	20 hour rate 6.70A to 10.50V	134.00Ah
	10 hour rate 11.80A to 10.50V	118.00Ah
	5 hour rate 20.50A to 10.20V	102.50Ah
<b>Internal Resistance</b>	3 hour rate 30.90A to 9.90V	92.70Ah
	1 hour rate 74.90A to 9.60V	74.90Ah
	Full Charged Battery@25°C	<5.0mΩ
<b>Energy Density (20-hr. rate)</b>	95.25W-h/l	
<b>Specific Energy (20-hr. rate)</b>	38.75W-h/kg	
<b>Shelf Life</b> (nominal capacity at 20°C)	1 Month	97%
	3 Months	91%
	6 Months	83%
<b>Max.Discharge Current@25°C</b>	7 Min.	402.0A
<b>Max Short-Duration Discharge Current</b>	10 Sec	1005.0A
<b>Standby Use Charge</b> (Constant Voltage) @25°C	Initial Charging Current Less than 40.2A Voltage 13.6-13.8V	
	Cycle Use Charge (Constant Voltage) @25°C Initial Charging Current Less than 40.2A Voltage 14.2-14.4 V	
<b>Operating Temperature Range</b>	Charge	-20°C to 50°C
	Discharge	-40°C to 60°C

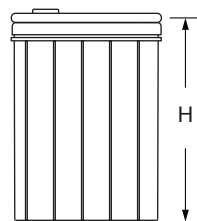
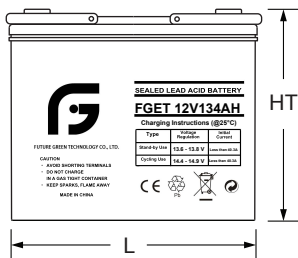
### GENERAL FEATURES

mm



Unit: mm

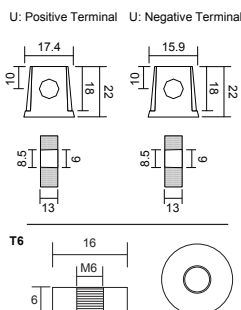
Length	340±1
Width	173±1
Height	280±1
Total Height	287±1
Weight(kg)	41.5±3%

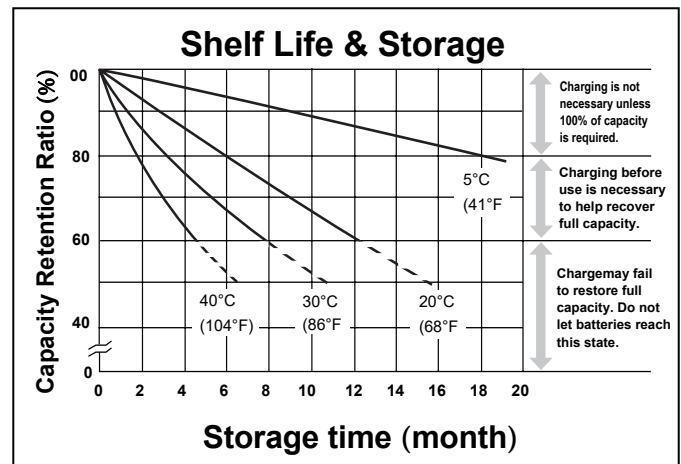
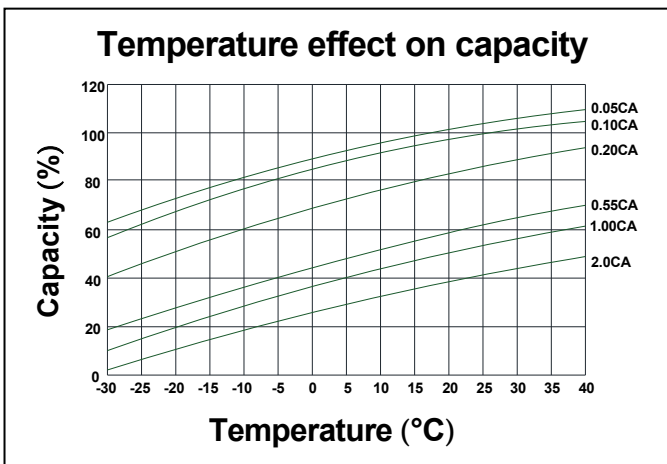
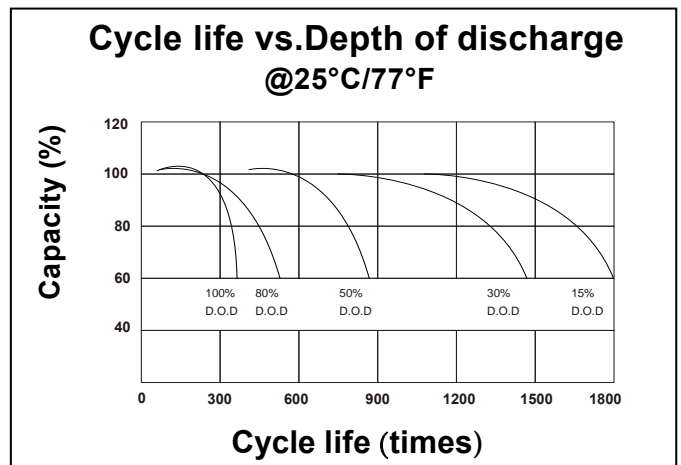
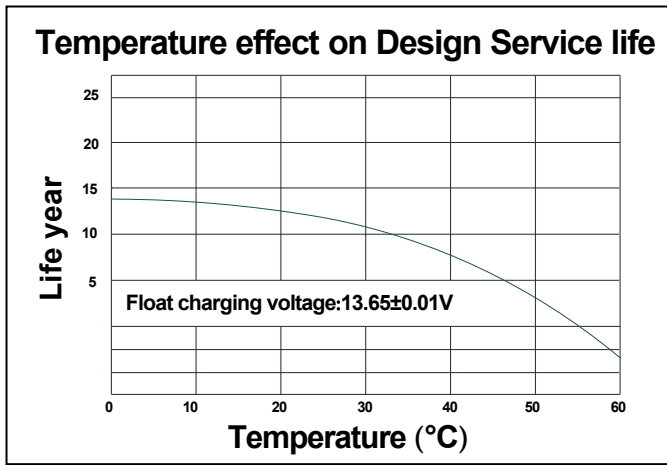
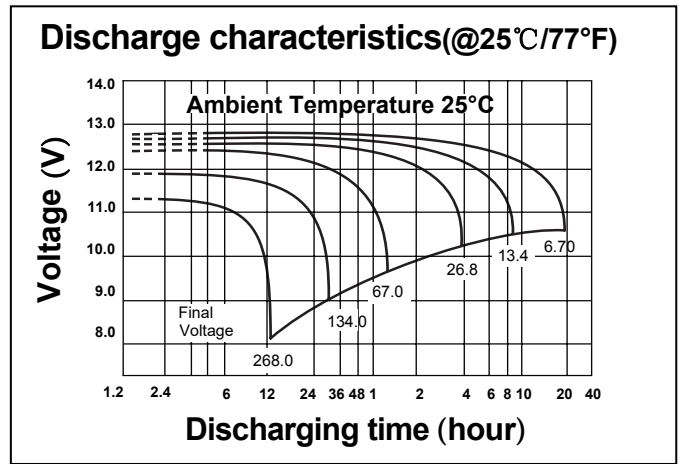
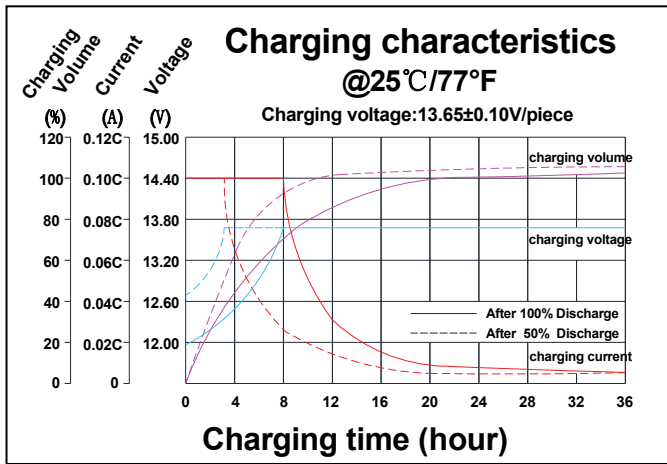


### TERMINALS

mm

- U: Universal terminals: Heavy-duty posts with 'nut & bolt' fasteners
- T6: Threaded insert w. 6 mm stud fastener





**CONSTANT CURRENT DISCHARGE RATINGS (Amperes at 25°C)**

F.V./Time	10MIN	15MIN	30MIN	1HR	2HR	3HR	4HR	5HR	8HR	10HR	20HR
9.60V	228.4	183.3	122.9	74.9	44.8	31.0	25.4	20.8	14.3	12.1	7.37
10.0V	217.3	179.6	121.8	74.6	44.5	30.9	25.3	20.7	14.2	12.0	7.10
10.2V	209.6	176.8	121.0	73.9	44.1	30.6	25.2	20.5	14.1	11.9	6.90
10.5V	195.8	170.3	119.2	73.2	43.8	30.5	24.9	20.3	14.0	11.8	6.70
10.8V	180.6	158.8	115.0	71.4	43.0	29.7	24.3	19.9	13.7	11.6	6.30
11.1V	163.3	144.1	108.8	67.9	41.1	28.4	23.2	19.1	13.2	11.3	6.03