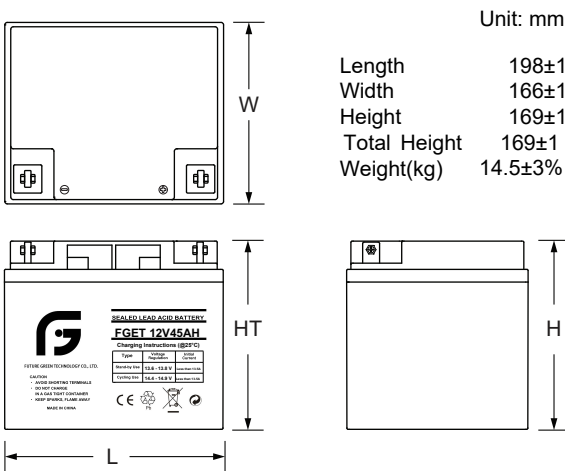


GENERAL FEATURES

- **Long Service Life** - Thick plate design and efficient gas recombination yield a service life expectancy of up to 10 years in standby mode.
- **Low Internal Resistance** - Superb high-rate discharge characteristics ensure reliable performance in UPS and Telecom applications.
- **Maintenance-Free, Non-Spillable** - Proven VRLA technology guarantees safe operation without maintenance and 'non-restricted article' status for transportation.
- **Low Self-Discharge** - Lead-calcium alloy grids and use of high purity lead account for superior shelf-life characteristics permitting storage for extended periods of time.
- **Designed-In Reliability** - Cutting-edge manufacturing and process control combined with meticulous quality assurance procedures guarantee consistent and dependable performance

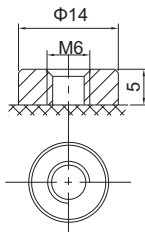
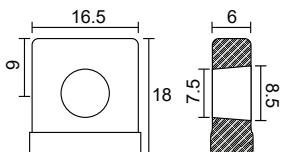
GENERAL FEATURES



TERMINALS

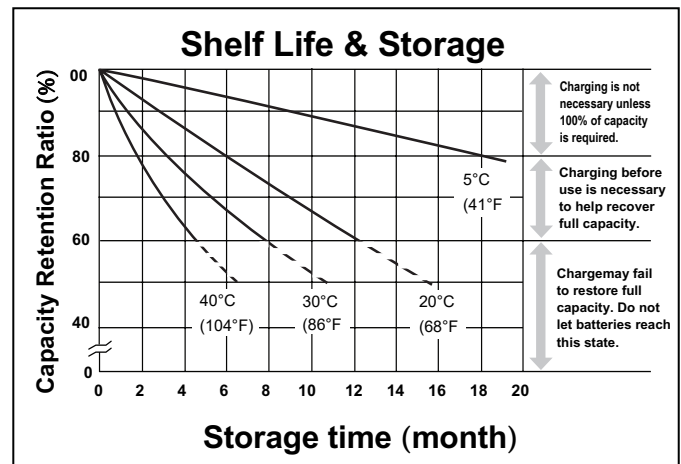
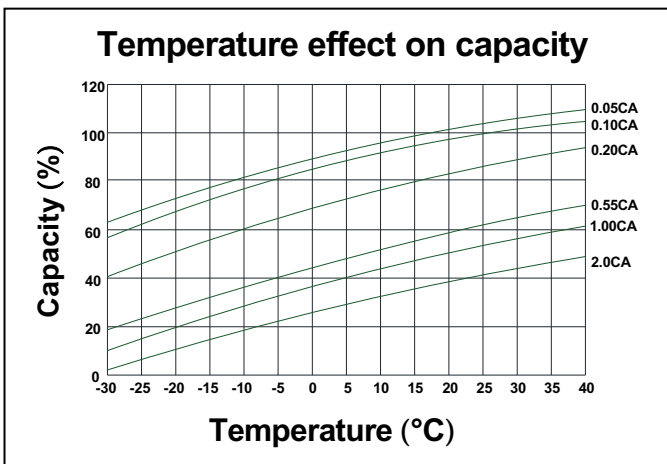
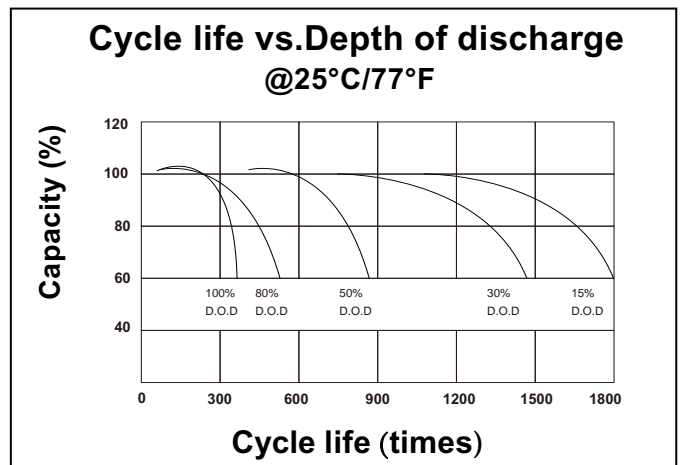
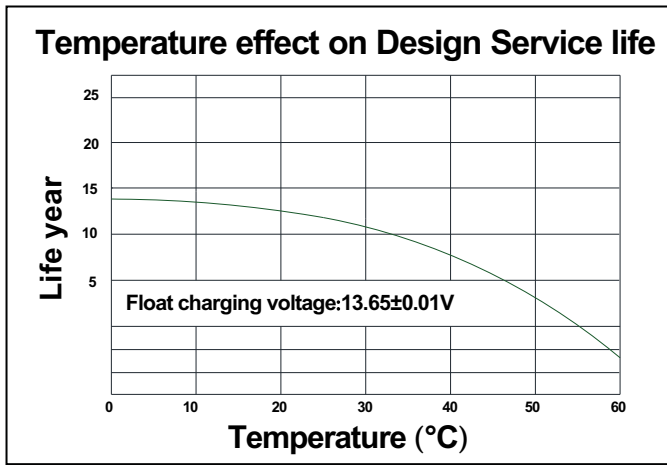
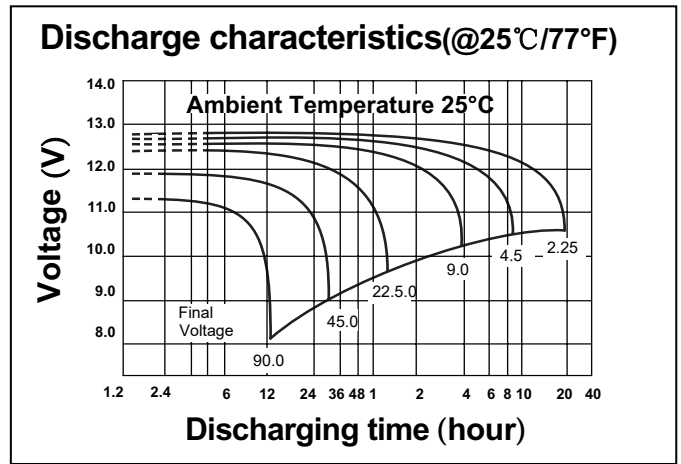
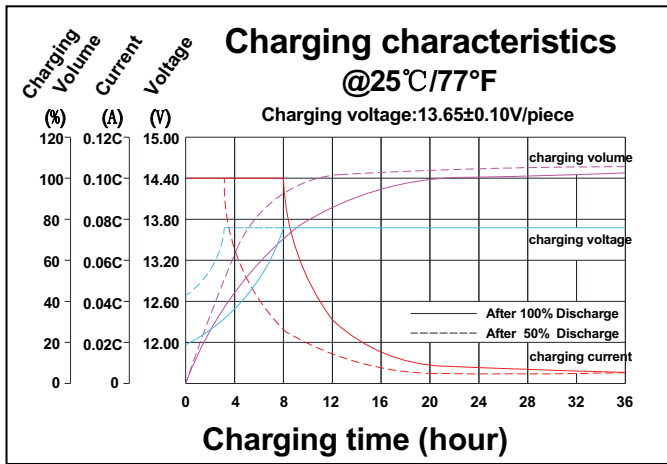
mm

- NB4: Heavy duty terminal posts with nut and bolt fasteners
- T6: Threaded insert w. 6 mm stud fastener



PERFORMANCE SPECIFICATIONS

Nominal Voltage	12V(6 cells)	
Design Floating Life @25°C	12 Years	
Nominal Capacity @25°C	20 hour rate	45.00Ah
	10 hour rate	43.30Ah
	5 hour rate	38.85Ah
	3 hour rate	33.69Ah
Internal Resistance	11.23A to 9.90V	27.30Ah
	1 hour rate	27.30Ah
	27.30A to 9.60V	<7.8mΩ
Energy Density (20-hr. rate)	97.21W-h/l	
Specific Energy (20-hr. rate)	37.24W-h/kg	
Shelf Life (nominal capacity at 20°C)	1 Month	97%
	3 Months	91%
	6 Months	83%
Max.Discharge Current@25°C	7 Min.	135.0A
Max Short-Duration Discharge Current	10 Sec	427.50A
Standby Use Charge (Constant Voltage) @25°C	Initial Charging Current	Less than 13.5A
	Voltage	13.6-13.8V
Cycle Use Charge (Constant Voltage) @25°C	Initial Charging Current	Less than 13.5A
	Voltage	14.5-14.9 V
Operating Temperature Range	Charge	0°C to 50°C
	Discharge	-20°C to 60°C



CONSTANT CURRENT DISCHARGE RATINGS (Amperes at 25°C)

F.V/Time	5MIN	10MIN	15MIN	30MIN	1HR	2HR	3HR	4HR	5HR	8HR	10HR	20HR
9.60V	140.75	103.60	80.77	49.22	27.30	16.32	11.27	9.34	7.86	5.37	4.45	2.38
10.0V	136.64	98.56	79.11	48.37	27.18	16.20	11.23	9.30	7.82	5.33	4.41	2.33
10.2V	132.63	95.11	77.87	47.48	26.93	16.08	11.14	9.25	7.77	5.28	4.37	2.29
10.5V	119.09	87.76	74.14	47.11	26.67	15.96	11.10	9.17	7.68	5.24	4.33	2.25
10.8V	107.52	80.02	68.35	46.31	26.04	15.67	10.80	8.95	7.54	5.15	4.28	2.20
11.1V	91.77	71.52	61.30	43.36	24.74	14.98	10.32	8.52	7.21	4.93	4.15	2.07